

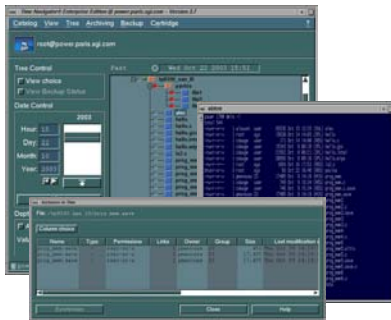
TIME NAVIGATOR AND SGI DMF

Alliance Solution Datasheet

Data Protection Solution



Data Protection and Data Retention for SGI Data Migration Facility (DMF)



Depending of DMF file status, Time Navigator will back up data or inodes with DMF attributes.

Time Navigator offers an integrated data protection and data retention (archive) solution for large, data-intensive DMF environments while complying with the challenges of protecting migrated data. Time Navigator provides a non-intrusive, DMF-aware solution to solve the challenges of implementing backup and archival policies on a migrated environment.

DMF, SGI's premier solution for Data Lifecycle Management, transparently migrates files from online storage to near-line storage based on user-defined criteria such as time of last access. All data is transparently recalled to primary storage when accessed, so users never need to know where the data resides. Time Navigator is DMF-aware and allows you to define the right backup or archive policies for both migrated and non-migrated data.

FEATURES & BENEFITS

Data Protection for DMF

Time Navigator has been integrated with DMF so it offers the ability to set up backup policies that take into account the DMF file status, allowing full backup or incremental backup without migrating data back, therefore without any impact on the DMF system.

Data Retention (archive) for DMF

Time Navigator offers the ability to select and archive targeted files from DMF, with migration of selected data in order to write them on another media for long-term retention.

No Impact to DMF

The main challenge in this environment is to run a backup without massively migrating data back. Time Navigator intelligently backs up resident files and only stub files with attributes for migrated data, avoiding any unnecessary media movement in DMF.

Reduced TCO

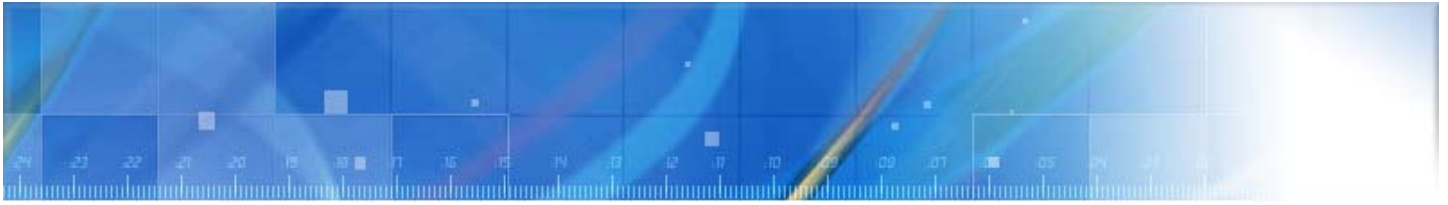
Time Navigator is a comprehensive data protection software for Unix, Linux, Windows. By consolidating the DMF backup with the enterprise backup solution, you will be able to use existing tape libraries and reduce the time and resources needed for backup administration.

Scalability

As one of the most scalable solutions on the market, Time Navigator is capable of protecting very large DMF environments with multiple terabytes of data.

Fast and Easy restore

Time Navigator enables Time Navigation, an image-based method for browsing, selecting and restoring data. Time Navigation is the most appropriate method for protecting high-volume data environments.



FEATURES & BENEFITS

Storage Challenges

- Protect a DMF environment
- Archive data already migrated in DMF for long-term retention
- Restart after a loss of the primary disks
- Protect migrated data from loss of secondary storage
- Restore single file or set of files without breaking DMF consistency

Time Navigator Features

- Time Navigator uses the DMF file status (REG, DUL, OFL, MIG, UNM...) through the BAPI API to back-up either the entire data or only inodes. Incremental backup based on DMF file status.
- Read full data even if off-line in order to archive a copy onto another media with the Time Navigator Archive Server
- Full and incremental backup of resident files and only inodes from migrated files allows to recover the full disk and then re-synchronize with DMF.
- DMF-aware incremental backup on the primary disks for capturing copies of the data before it goes to the secondary storage
- Files are restored with DMF attributes.

Enterprise Benefits

- All data including migrated data is protected.
- No impact to the DMF system.
- Authorizes end-users to build archives of migrated data.
- No impact to the DMF system.
- Disaster Recovery protection for the primary disks.
- Better data protection.
- Restore files for the end-users with no impact on DMF system.

SUPPORTED CONFIGURATIONS/MINIMUM REQUIREMENTS

Time Navigator version

3.7.0.3 and higher

Time Navigator server platform

AIX, Irix, Solaris, Linux, Windows, Tru64, HP-UX

DMF platform

Irix

File System

CXFS

ABOUT TIME NAVIGATOR

Designed for high performance backup and recovery, Time Navigator protects critical business data throughout the heterogeneous enterprises with the same ease of use and efficiency, whether you are managing a few servers, a departmental workgroup or a multi-location Enterprise network. Built upon an open, highly scalable architecture, Time Navigator provides advanced backup and recovery capabilities that fully leverage the latest storage networking architectures including NAS, SAN and IP Storage. With its intuitive Graphical User Interfaces (GUI) and its unique concept of Time Navigation, Time Navigator delivers unparalleled restore performance.

ABOUT ATEMPO

Atempo is a leader in data protection for information lifecycle management (ILM). Atempo's Time Navigator™ data protection suite delivers comprehensive data security and unparalleled recovery performance, allowing users to rapidly and accurately restore data from any given point in time. Time Navigator provides the infrastructure that enables enterprises to achieve their ILM objectives, including compliance with new regulatory requirements. Founded in 1992, Atempo has more than 2000 customers worldwide, with a sales and support network exceeding 100 resellers. The company's dual headquarters are in Palo Alto, Calif., and Paris, France. For more information visit: www.atempo.com.

Australia
Tel: +61 2 9025 3936
France
Tel: +33 (0) 1 64 86 83 00

Germany
Tel: +49 (0) 711 89660-349
The Netherlands
Tel: +31 (0) 70 4 16 17 04

Korea
Tel: +82-(0)2-2052-1189
Singapore
Tel: +65 6430 6728

Spain
Tel: +34 91 788 2617
United Kingdom
Tel: +44 (0) 208 610 6012

USA
Tel: +1 (650) 494-2600



© Atempo 2001-2004 Atempo and the Atempo logo are trademarks, and Time Navigator is a registered trademark of Atempo S.A. and Atempo Inc. All other products, services and company names mentioned herein may be trademarks of their respective owners.